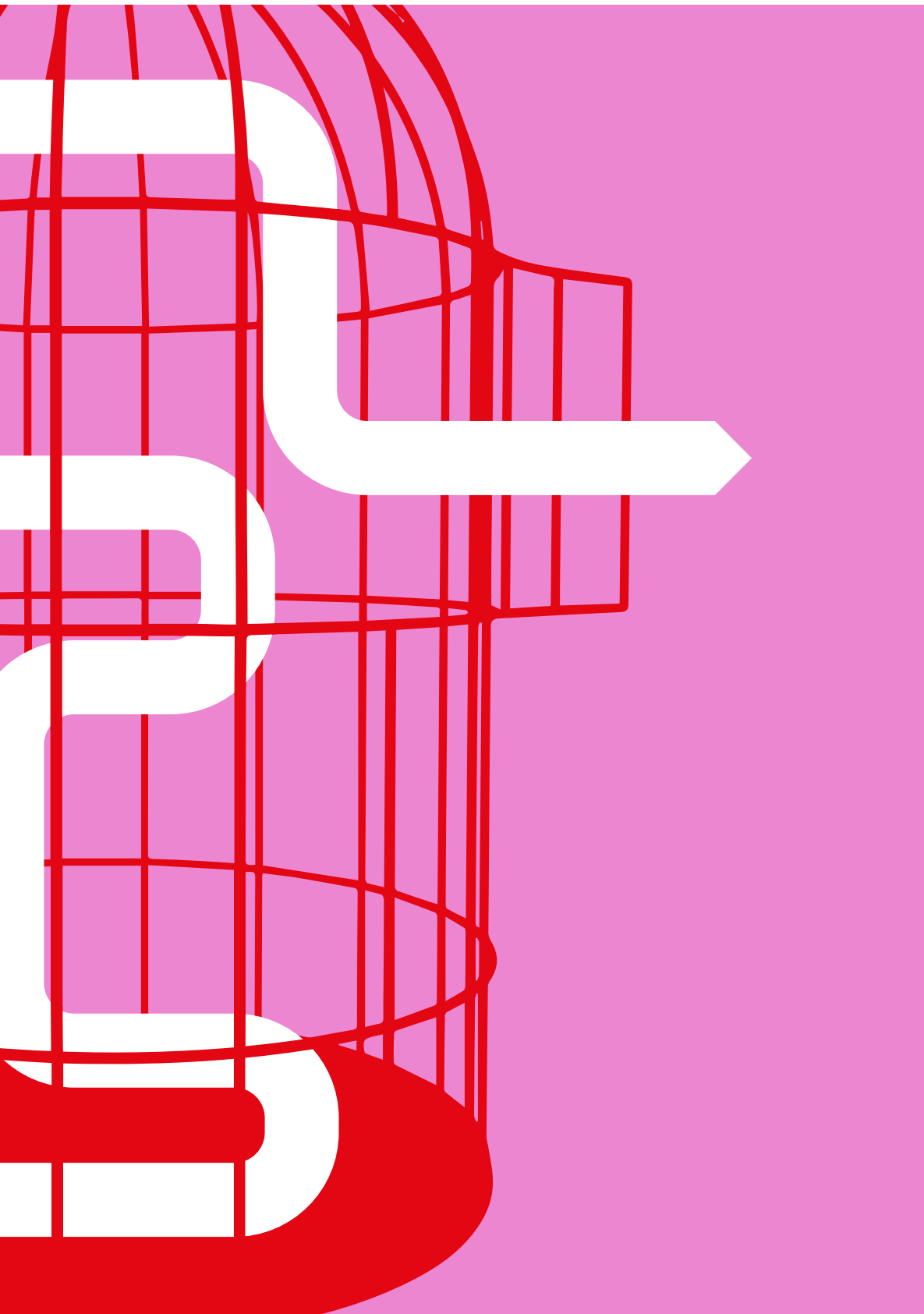


/9 months  
/280h

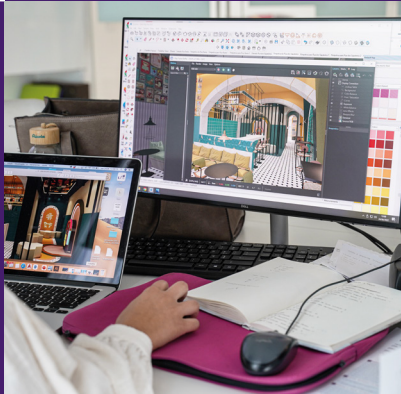
# INTERIOR DESIGN



## 3 REASONS TO CHOOSE INTERIOR DESIGN AT LSD

# 1.

You will learn to materialize your vision of exclusive spaces for housing, commerce or events in a relaxed and positive atmosphere.



# 2.

You will have access to its own methodology with a theoretical and practical approach aligned with the job market.



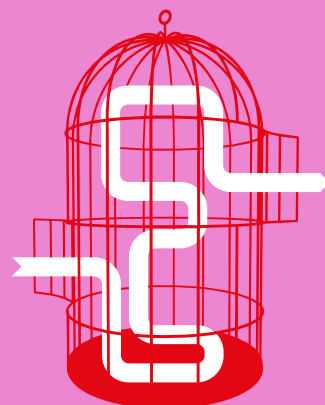
# 3.

State-of-the-art equipment, motivated teachers and experts in the job market.



## INTERIOR DESIGN

/9 months  
/280h



## WHERE YOU CAN WORK WITH OUR COURSE

OWN ATELIER

INTERIOR DESIGN ATELIER

ARCHITECTURE WORKSHOP

DESIGN AND DECORATION  
STORE

CONSTRUCTION AND REAL  
ESTATE COMPANIES

VOCATIONAL SCHOOL

**PROGRAM**

**01. HOUSING PROJECT - COMPARTMENT**

Grammar and Methodology of Interior Design: culture, technique and design domains; Coordination and phases of the design activity; The Interior Designer and disciplinary boundaries; Grammars of form and space; The process / project / product trilogy; Principles, variables, components and operations; Ideas, concepts and creativity in Interior Design; The contact with the customer; Geometry, Dimensioning and Functional Organization: Areas, functions and spatial distribution; Flows, circulation and access management; Measure, scale and proportion; Ergonomics and anthropometry relationships; Pre-stocks and parametric surveys; Types of drawing and representation techniques; Projections, perspective, drawing technics and mockup; Two-Dimensional Representation - AUTODESK Autocad: Navigation, interface, menus, commands and functions; Coordinate system and file management; Design, construction, visualization, operation and editing of entities; Layer properties and management; Quoting and communication system between platforms; Printing and composition spaces.

**02. HOUSING PROJECT - FIRE**

Color, Light, Restyling and Visual Composition: Styles, Fashions and Trends; Spatial perception and volumetric illusion; Color analysis: temperature, symbology and color codes; Characteristics, systems and types of lighting; Sources, foci, directions, efficiency and light intensities; Decorative aspects, accessories, patterns, textures and sensations; Building systems; Structural elements and construction technologies; Sustainability: Types, applications and resistance of materials; Environmental conservation and comfort; Ceilings, walls and floors; Coatings and finishes; Openings, doors and windows; heritage, recycling and sustainability; Technical infrastructure and work execution; Housing Design: Housing typologies and programs; The concept of Home Design; Divisions: living rooms, bedrooms, sanitary facilities, kitchen; Stairs, corridors and atriums; layout, organization of furniture and equipment; Functions, optimization and spatial flexibility; Analysis, evolution and mutation of dwelling; 3D Modeling - Sketchup: Navigation, interface, menus, commands and functions; Selection and visualization functions; Creation of entities and modeling of volumes; Editing tools and cross-platform communication; Management of tags, groups, components and extensions; Materials, colors and textures.

**03. TRADE, SERVICES AND LEISURE PROJECT**

Legislation, Rules and Budgeting; measurements; and Quantification; Brands and manufacturers; Universal Design and Disabled Mobility; General Regulation of Urban Buildings; Contacts and fees; Design of Commercial, Services and Leisure spaces: the exhibition, the exhibitor and the exposed; Diversity of programs, themes, contacts, formats and scenarios; Space, marketing and consumption of products/services; Visual Merchandising, attention and readability; Design of shop windows, showcases and supports; Space-permanence and space-sequence; Standardization of space and multifunctionality; Rendering - V-Ray: Types and distribution of lights; Cameras, views and animation of scenes; 3D modeling, rendering and image production.

**EXTRA-CURRICULAR/OPTIONAL**

Initiatives in partnership with companies in the decoration and construction sector; Promotion of public tenders.



**VALUE**

**APPLICATION FEE**  
€280

**SINGLE PAYMENT**  
\*€3080  
\*€280 DISCOUNT INCLUDED

**MONTHLY PAYMENTS**  
12 X €280

MORE PAYMENT OPTIONS AVAILABLE AT WWW.LSD.PT

**INFO**

**DURATION**  
9 MONTHS  
280 HOURS

**CERTIFICATE**  
ISSUED BY SIGO  
PLATFORM.



**DATES, SCHEDULES & PROMOTIONS**

ALL THE INFO AT  
WWW.LSD.PT



## LISBOA

Alameda dos Oceanos, 63D  
1990-208 Lisboa  
Portugal  
**+351 916 360 050**  
[cursos.lisboa@lsd.pt](mailto:cursos.lisboa@lsd.pt)

## PORTO

Praça do Bom Sucesso, 61, 4º andar  
4150-146 Porto  
Portugal  
**+351 966 107 988**  
[cursos.porto@lsd.pt](mailto:cursos.porto@lsd.pt)

## FARO

Praça Dom Francisco Gomes, 2, 2º andar  
8000-162 Faro  
Portugal  
**+351 927 427 122**  
[cursos.faro@lsd.pt](mailto:cursos.faro@lsd.pt)



[WWW.LSD.PT](http://WWW.LSD.PT)

